

## WEEKLY CURBSIDE TRASH

Place trash curbside by **7:00 a.m.** on designated collection day.

- ★ Trash must be in a tied plastic bag, either a town bag or a commercial bag with a "BAG TAG" attached to each bag. Bags should not exceed 20 lbs.

## BULK ITEM PICKUP

Starting July 1, 2022, The Town of North Attleboro Solid Waste Department will no longer be using the "Yellow Bulky Item Tags" for the disposal of curbside bulk items. All requests and payments for collection of bulk items will be made directly through our hauling company, Waste Management at (800)-972-4545. For more information and instructions, please see our webpage at [nattleboro.com/solid-waste-department](http://nattleboro.com/solid-waste-department).

## BULKY METAL PICKUP

FREE pickup of bulky metal objects and white goods will be held monthly by appointment.

- To be eligible, you must have paid the annual solid waste fee in full.
- To be put on the schedule, you need to call the hotline at 508-699-0151.
- To be eligible, items must be 90% metal.
- To see a complete list of acceptable/unacceptable items and the next collection date, please visit our website at [nattleboro.com/solid-waste-department](http://nattleboro.com/solid-waste-department).

## WHERE TO BUY BAGS & BAG TAGS

### BAGS & BAG TAGS

- **North Attleborough Town Hall**  
Solid Waste Department  
43 South Washington Street
- **Shaw's Supermarket**  
125 Robert Toner Blvd. (Triboro Plaza)
- **Super Stop & Shop**  
206 East Washington St. (N. Attleboro)  
251 Washington St. (So. Attleboro)

### BAGS ONLY

- **Bob's Market**  
42 Arnold Road
- **CVS Pharmacy #938**  
8 East Washington Street
- **Market Basket# 76**  
1200 Newport Avenue (So. Attleboro)
- **Shell Gas Station**  
461 East Washington Street
- **Super Stop & Shop**  
109 Taunton Street (Plainville)
- **Pick N Pay**  
54 South Washington Street
- **Speedway**  
154 North Washington Street

## TOWN OF NORTH ATTLEBOROUGH

### Solid Waste Department

## Curbside Trash & Recycling



### Solid Waste Department

43 South Washington Street (Town Hall)

**Hours:** Monday—Wednesday 8:00 AM—4:00 PM

Thursday 8:00 AM—6:00 PM

Friday 8:00 AM—12 Noon

**Phone:** 508-699-0105

**Fax:** 508-643-1268

**E-mail:** [solidwaste@nattleboro.com](mailto:solidwaste@nattleboro.com)

# Single Stream Recycling

## Sorting recyclables is no longer necessary!

With our new single stream 96 gallon recycling carts you can now place ALL of your recyclables neatly into one container.

### WHAT GOES IN THE CART?

➤ **Glass Bottles & Jars**  
(clean/no food residue)

➤ **Plastic Containers with necks**



➤ **Aluminum** (clean/no food)  
(cans, pie plates, trays)



➤ **Tin Cans** (clean/no food)

➤ **White and Colored Paper**

➤ **Newspapers and Magazines**

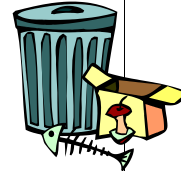
➤ **Junk Mail**

➤ **Cardboard Boxes**  
(cereal boxes without liners)



**All containers should be washed and not have any food particles or residual liquid.**

## DON'T PUT THESE IN YOUR CART



### TRASH

PLASTIC BAGS

PIZZA BOXES



LIGHT BULBS

METAL

PLASTIC WRAP



FERTILIZER BAGS

DISHES/CERAMICS

TOYS

CLOTHES

WINDOW GLASS

ELECTRONICS

WIRING



RUBBER

SHOES

### YARD WASTE

SOILED PAPER

STYROFOAM

WOOD

COAT HANGERS

MOTOR OIL CANS

PLASTIC PLANT POTS

MOPS

WAXED CARTONS

PACKING PEANUTS

SEEDLING SIX PACKS

PAPER TOWELS

GARDEN HOSES

VINYL

TOOLS

### ANY THING WITH FOOD STILL IN IT

### COLLECTION DAY

Trash and Recycling must be at curbside by 7:00 A.M. on your traditional collection day. Recycling and trash are collected on the same day. If a holiday is celebrated on a weekday, then collection will be delayed by one day.

### CART CARE

If you experience any problems with your cart (broken lid, lost or broken wheels) please contact the Solid Waste Dept. (508-699-0105) to arrange for repairs to be made.

## IMPORTANT REMINDERS

### Cart etiquette

- Each cart has been assigned to a single household and has a serial number for identification.
- All materials must fit in the cart so that the lid is closed. Only materials within the cart will be collected. Overflowing carts will not be tipped.
- Cart placement is important — The arrows on the lid must be pointing to the street. The cart should be on the corner of the driveway. Please be careful not to block the sidewalk plow during the winter months.
- The cart must be 3 feet away from poles, mailboxes and trash cans.
- Contaminated carts will be tagged and left. If cleaned out they will be tipped the following week.

### Paper/Cardboard

- Paper towels, tissues, paper plates and paper egg cartons do not have enough fiber to be recycled. Please put in your compost bin.

### Plastics

- Plastic containers include bottles with necks and tubs such as large yogurt and margarine containers.
- Do not put your recycling in plastic bags.
- Recycle your plastic bags at your local grocery store.
- No bubble wrap or film plastic accepted.



### Yard Waste & Grass Clippings

- Compost Site on Plain St open 9 months/year. For schedule, please visit DPW's webpage at [nattleboro.com/departments-of-public-works](http://nattleboro.com/departments-of-public-works)